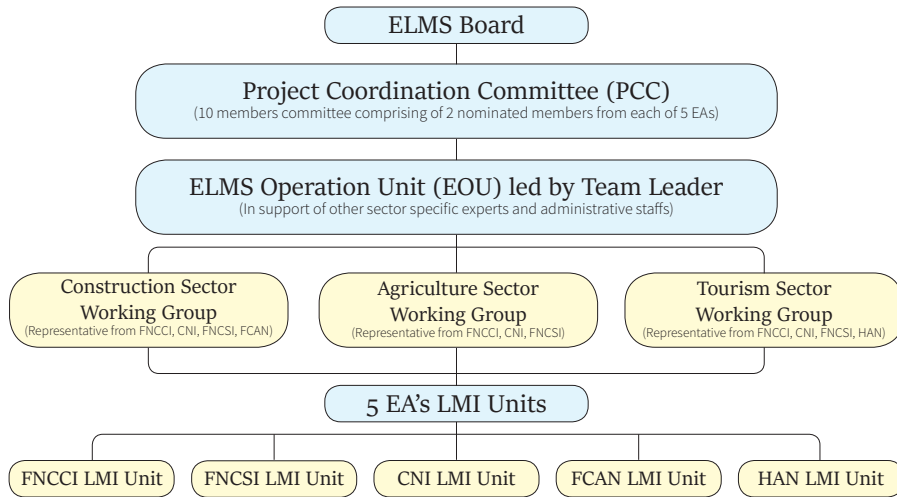


ELMS Project Structure



Board Team Members

Shekhar Golchha
FNCCI President

Satish Kumar More
CNI President

Umesh Prasad Singh
FNCSI Officiating President

Rabi Singh
FCAN President

Shreejana Rana
HAN President

PCC Members

Rabin Kumar Shrestha - *FNCCI*

Sumit Kumar Kedia - *FNCCI*

Birendra Raj Pandey - *CNI*

Megh Nath Neupane - *CNI*

Mohan Katuwal - *FNCSI*

Shobha Gurung - *FNCSI*

Binayak Shah - *HAN*

Sajan Shakya - *HAN*

Nicholas Pandey - *FCAN*

Roshan Dahal - *FCAN*

Contact details

Team Leader - Chandra Kanta Adhikari - cadhikario59@gmail.com
 FNCCI-LMI Unit - Ajit Gupta - gajitfncci@gmail.com
 CNI-LMI Unit - Gunjan Khanal - gunjankhanal303@gmail.com
 FNCSI-LMI Unit - Jagannath Poudel - poudeljagannath@gmail.com
 FCAN-LMI Unit - Subhekchya Singh - fcan@8975@gmail.com
 HAN-LMI Unit - Pratistha Maharjan - hanresearch2020@gmail.com

Establishing an Employer led Labour Market Secretariat

Email : info@elms.com.np

Where we are :
 Pachali Shahid Shukra FNCCI Milan Marg, Teku, Kathmandu
 Phone : 01 5362061
 Website : elms.com.np

"Establishing an Employer led Labour Market Secretariat (ELMS)"



Establishing an Employer led Labour Market Secretariat

Kathmandu, Nepal



Central Level ELMS Project launching program, Kathmandu

"Establishing an Employer led Labour Market Secretariat (ELMS)" Project in joint implementation of



With support from



Funded by



Managed by



Province Launching Glimpses



Grant Contract Signing FNCCI and British Council



ELMS launching program, Biratnagar (Province 1)



ELMS launching program, Birgunj (Province 2)



ELMS launching program, Bagmati Province



ELMS launching program, Gandaki Province



ELMS launching program, Lumbini Province



ELMS launching program, Karnali Province



ELMS launching program, Sudurpaschim Province

Objective

To create a model for Employer Associations (EAs) to conduct harmonised demand side Labour Market Information (LMI) activities.

Supporting Objectives

- To develop an effective operational framework and infrastructure to deliver harmonised employer led LMI activities.
- To develop employers' capacity to design and deliver LMI activities.
- To develop a shared understanding of skills, knowledge and behaviours for identified key job roles in three target sectors - Agriculture, Construction and Tourism.
- To develop LMI reports and effective dissemination activities.

Main Activity Areas

- Establishing Employer Led Labour Market Secretariat (ELMS) Board with Project Coordination Committee (PCC) and Governance processes.
- Establishing and operating ELMS Operational Unit (EOU) and operational processes.
- Establishing Sector Working Groups (SWG) and LMI Units to develop a shared classification of skills in key job roles and conducting employer led labour market surveys.

Board

The Five member ELMS board is formed representing Employer Associations. The president from Employer Associations represent the board. The board conducts 10 scheduled meetings during the project.

Project Coordination Committee

A project coordination committee of 10 members was formed. The Project Coordination Committee members are the two nominees from each EAs; for supporting and operationalizing the ELMS Board.

Sector Working Group

The Sector Working Group on Agriculture, Construction, and Tourism is formed for reaching a consensus on the occupational standardization of LMI. The EAs nominated the sector-specific employees (FNCCI, FNCSI, CNI x3, HAN and FCAN x2) to represent the SWG. In total there are 11 SWG members.

Expected Results

- Established Labour Market Information System infrastructure: ELMS Board/PCC, ELMS Operational Unit (EOU), CAT-Sector Working Groups (SWG) and EA LMI Units.
- Linking 30 occupations' standard in National Standard Classification of Occupation (NSCO) system.
- Shared understanding of skills, knowledge and behaviours (workers' traits) for key job roles in three target sectors (10 competency standard per sector)
- Conduct LMI studies covering 24 districts across the 7 provinces.

Project Duration

November 2020 to December 2021